



發展項目的位置  
Location of the Development

摘錄自地政總署測繪處在 6,000 呎的飛行高度拍攝之鳥瞰照片，照片編號 E225606C，飛行日期：2024 年 8 月 7 日。

Adopted from part of the aerial photograph taken by the Survey and Mapping Office, Lands Department at a flying height of 6,000 feet, photograph No. E225606C, date of flight: 7 August 2024.

香港特別行政區政府地政總署測繪處 © 版權所有，未經許可，不得複製。

Survey and Mapping Office, Lands Department, The Government of HKSAR © Copyright reserved – reproduction by permission only.

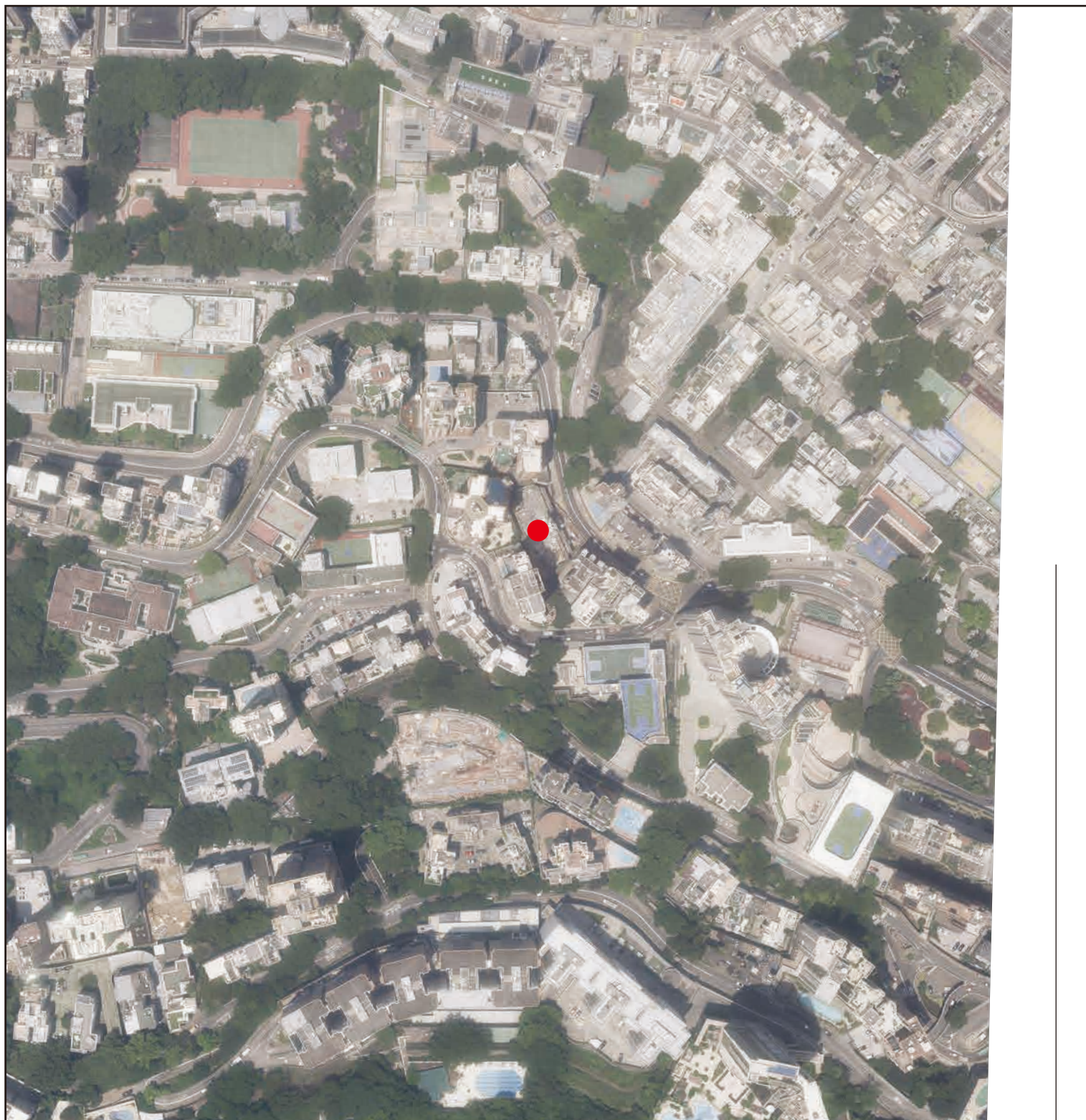
鳥瞰照片並不覆蓋本空白範圍

This blank area falls outside the coverage of the aerial photograph

備註：1. 發展項目的鳥瞰照片之副本可於售樓處開放時間內免費查閱。| 2. 由於技術原因（例如發展項目形狀不規則），此鳥瞰照片可能顯示多於《一手住宅物業銷售條例》所要求顯示的範圍。

Notes : 1. Copy of the aerial photograph of the Development is available for free inspection at the sales office during opening hours. | 2. Due to technical reasons (such as the irregular shape of the Development), this aerial photograph may show more than the area required under the Residential Properties (First-hand Sales) Ordinance.





發展項目的位置  
Location of the Development

摘錄自地政總署測繪處在 6,000 呎的飛行高度拍攝之鳥瞰照片，照片編號 E225607C，飛行日期：2024 年 8 月 7 日。

Adopted from part of the aerial photograph taken by the Survey and Mapping Office, Lands Department at a flying height of 6,000 feet, photograph No. E225607C, date of flight: 7 August 2024.

香港特別行政區政府地政總署測繪處 © 版權所有，未經許可，不得複製。  
Survey and Mapping Office, Lands Department, The Government of HKSAR © Copyright reserved – reproduction by permission only.

鳥瞰照片並不覆蓋本空白範圍

This blank area falls outside the coverage of the aerial photograph

備註：1. 發展項目的鳥瞰照片之副本可於售樓處開放時間內免費查閱。| 2. 由於技術原因（例如發展項目形狀不規則），此鳥瞰照片可能顯示多於《一手住宅物業銷售條例》所要求顯示的範圍。

Notes : 1. Copy of the aerial photograph of the Development is available for free inspection at the sales office during opening hours. | 2. Due to technical reasons (such as the irregular shape of the Development), this aerial photograph may show more than the area required under the Residential Properties (First-hand Sales) Ordinance.